

Specifications	
Convertible Stock	
Paper (Depending On Quality), Min.	80 g/m²
Board (Depending On Quality), Up To	1000 g/ m²
Corrugated Board, (Micro-flute) Up To	2 mm
Pile Height	
Feeder : Normal Mode, Max.	1400 mm
Feeder : Non-stop Mode, Max.	1100 mm
Delivery : Normal Mode, Max.	1200 mm
Delivery : Non-stop Mode, Max.	1200 mm
Diecutting, Embossing And Stamping	
Production Rate For Stamping & Diecutting, Max.	7500 s/h
Gripper Margin	9 – 17 mm
Height of Embossing Dies	7 mm
Platen Temperature	50 – 160°C, 12 individually adjustable zones
Reel Diameter, Max. - Vertical	300 mm
Reel Diameter, Max. - Cross Foil	250 mm

	920	1060
Production		
Sheet size, max.	920 × 650 mm	1060 × 760 mm
Sheet size, min.	360 × 320 mm	400 × 350 mm
Stamping and embossing size, max.	910 × 630 mm	1050 × 740 mm
Stamping and embossing size, min.	340 × 300 mm	380 × 330 mm
Adjustable platen pressure, max.	2.5 (250t) MN	2.6 (260t) MN
Diecutting Size		
With gripper margin, max.	920 × 630 mm	1050 × 740 mm
Without gripper margin, max.	920 × 640 mm	1050 × 743 mm
Machine dimensions & Weight		
Dimensions (L × W × H)	5955 × 5182 × 2660 mm	6225 × 5738.5 × 2765.5 mm
Gross (in seaworthy packing)	21 t	27 t

* In the interests of product improvement, the manufacturer reserves its rights to change specifications and features without notice.

EFOIL 920/1060 ELITE automatic hot foil stamper is packed with ETERNA state-of-the-art technical innovation, and cutting-edge manufacturing process to ensure the quality of this machine in every detail. Operator friendly design makes production easier than ever. It can both broaden your product portfolio and shorten your investment cycle.

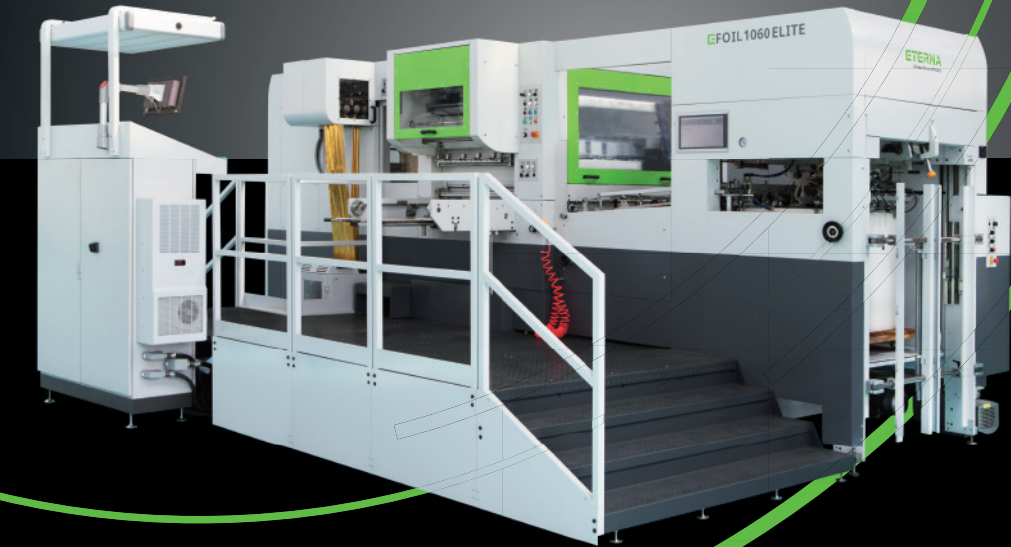
A perfect combination of technology and manufacturing excellence

📍 Address:
1125 Taishun Road, Anting Town, Jiading District, Shanghai, China
☎ +86-21-6426 2538
✉ export@eterna-group.com
🌐 www.eterna-group.com

Automatic
Hot Foil Stamper

EFOIL 920/1060 ELITE

Simply efficient



Automatic
Hot Foil Stamper

EFOIL 920/1060 ELITE

The special design enhances the quality even for difficult jobs. We provide you with dedicated and comprehensive pre-sales technical consultation, solutions and services to ensure your efficient production.



Main Features

- Based on the proven mechanical design from the Group;
- Centerline system ensures uniformed and quick set up throughout all parts of the machine from feeder to delivery, and improves the product quality and efficiency;
- Specially designed unique, adjustable dwell system maintains pressure for longer time on contact, which can greatly enhance the transfer effects of foil to paper;
- The gripper chain safety lock to ensure safe operation when the machine stops ;
- The unified PLC control system makes the electrical maintenance easy.



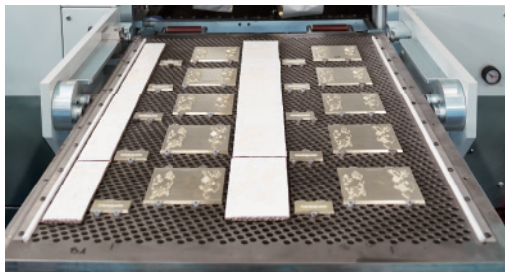
FEEDER SECTION

- Feeder pile side shift allowing lateral correction of the pile while in production;
- Manual non-stop device with timed exchange reminder.



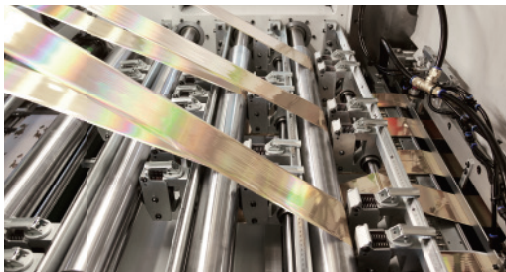
FEED TABLE

- The ultrasonic double sheet detector is precise and easy to adjust, which can avoid scratching of printed surface.



DIE-CUTTING PLATEN

- Heated upper platen with 12 independently adjustable zones;
- Motorized platen pressure adjustment as well as adjustable dwell timer to ensure precise pressure and time on contact for all kinds of difficult jobs.



HOT FOIL STAMPING SYSTEM

The unique dwell design can greatly improve the effectiveness of foil stamping up to 50%, compared to those traditional ones.

BENEFITS AND VALUES:

- Higher stamping and embossing speed than traditional system;
- Better end results;
- Lower raw material quality requirements.



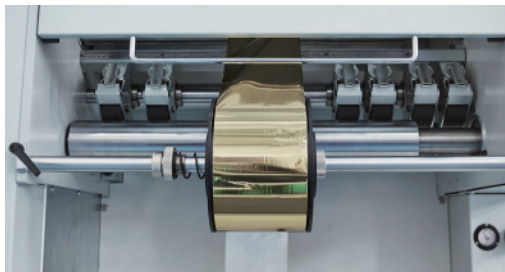
FOIL RACK

- Swing-out design of foil rack can greatly reduce the labor intensity of foil changing;
- This unique ergonomic design can also greatly reduce setup time.



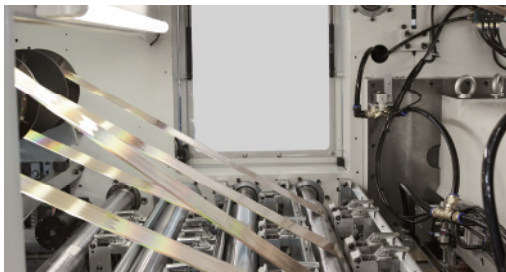
DELIVERY SECTION

- Pneumatically controlled pivoting front joggers for easy sampling during the production;
- Automatic non-stop apron provides more buffer during the pallet exchange.



FOIL ADVANCING SHAFTS

- 3 foil advancing shafts are standard equipment, and 4,6,8 shafts as optiona;
- 2 cross-foil advancing shafts as optional.



ERGONOMICALLY DESIGNED

- Ergonomically designed workspace means many control surfaces can be operated either from Operator Side (OS) as well as Opposite Operator Side (OOS);
- Many essential adjustments and foil changing can be achieved from outside of the machine. It greatly improved work environment and saved a great deal of change-over time to increase productivity.