

# MAC 1200



## ONE RUN QUICK SET-UP

- Creasing in both directions
- Longitudinal and cross cut
- Slitting, flap cutting

All these operations can be carried out in the same run, which permits to avoid successive runs and handlings.

The blanks are counted by the machine which stops as soon as the required number of cases is achieved.

Cutting, creasing are programmed on the control desk and carried out on the cardboard sheet in the preselected locations.

Creasing and longitudinal cutting are carried out of by means of adjustable creasers and circular knives.

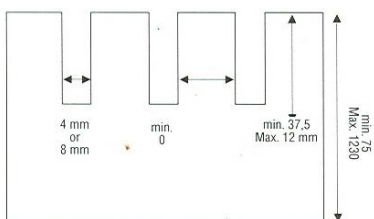
## AUTOMATIC FEEDER

Automatic feeding of the machine is ensured by a roller lift table combined with a friction feed roller (MECANELEC PATENT).

Even corrugated cardboard sheets can be fed easily into the machine.

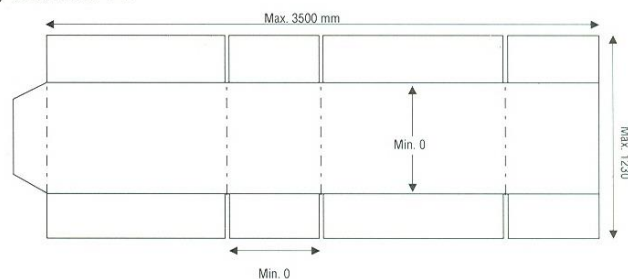
## TECHNICAL SPECIFICATIONS

- Automatic feeder, stack height : 850 mm
- Transport speed : 0 through 1600 mm/s



- Cutting and creasing speed : 0,6 sec.
- Minimum interval between two creasing channels : 0

- Required air pressure : 7 bar.
- Power supply : 6 KW 380 V three-phase current + ground



## OVERALL DIMENSIONS

