

## SEMI-AUTO GLUER MC 2800

# Mécanélec



Mécanélec

Z.E. La Penotte - 16410 GARAT - FRANCE

Tél : 33 (0)5 45 25 06 06 / Fax : 33 (0)5 45 25 04 12

e-mail : [infos@mecanelec.com](mailto:infos@mecanelec.com) - [www.mecanelec.com](http://www.mecanelec.com)

# SEMI-AUTO GLUER MC 2800



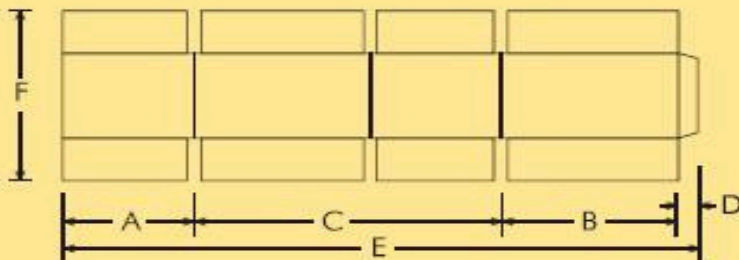
## COMPLETE SEMI-AUTOMATIC GLUEING SYSTEME FOR REGULAR SLOTTED CARTONS

The Semi-Auto Gluer MC 2800 is a complete semi-automatic machine for the glueing of regular slotted containers.

It includes:

- a roller top raising table with motorised hoist
- a glueing section with an extrusion glue unit
- a squaring section with a full width spanning unit
- a right angle counter ejector

The glue flap can be glued for either inside or outside of the box. Simple, sturdy and easy for maintenance. Highly reliable PLC replaces much less reliable relay-based control system. Valco Extrusion Glueing Systeme saves least half the glue used. "Dicar" Crushless Wheels, no damage to the board, and do away with caliper adjustment which results in considerably less change- over time. Squaring section with full size spanker.



	MIN	MAX
▶ A	140 mm	1100 mm
▶ B	140 mm	1100 mm
▶ C	280 mm	1400 mm
▶ D	30 mm	-
▶ E	560 mm	2800 mm
▶ F	240 mm	1300 mm

